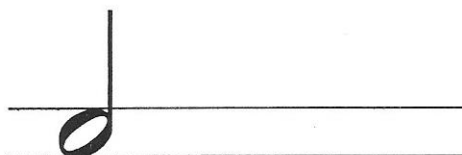
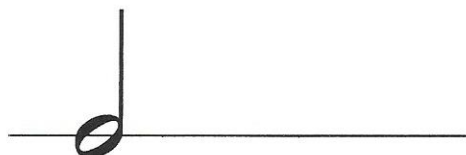


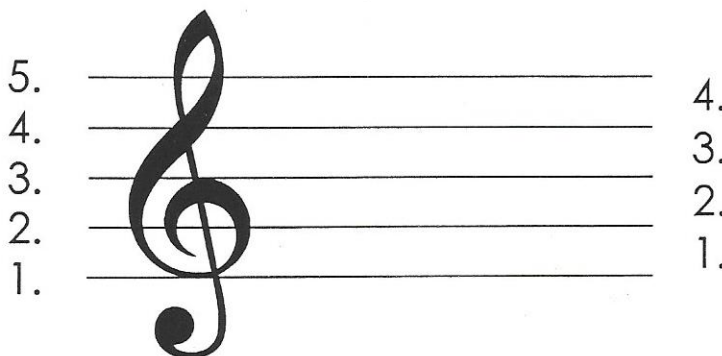


**Nota** je značka pre tón.




Noty zapisujeme do notovej osnovy, ktorá má 5 linajok a 4 medzery.

Na začiatku notovej osnovy píšeme huslový kľúč.



## Dĺžka nôt:

Nota celá



trvá štyri doby

Nota polová



trvá dve doby

Nota štvrťová

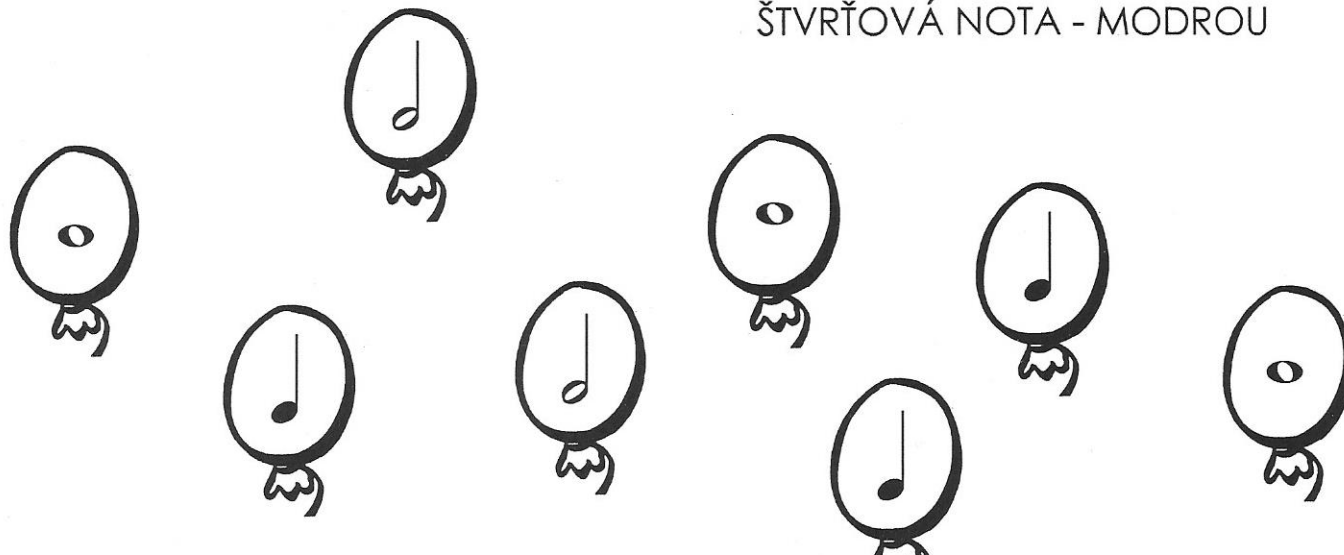


trvá jednu dobu

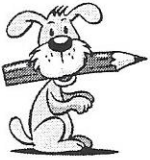


Vyfarbi balóniky:

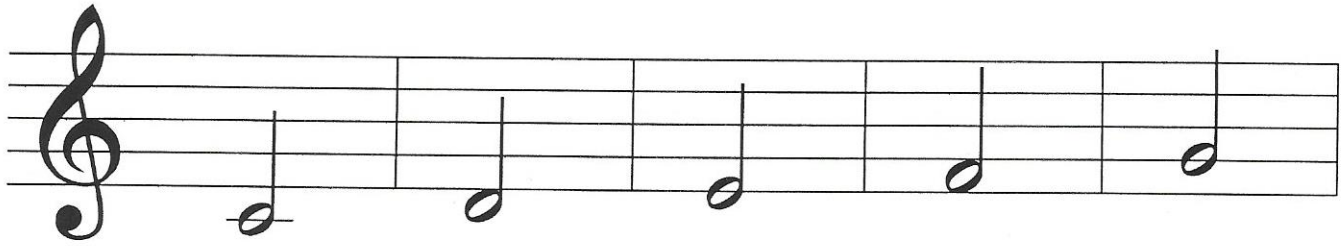
CELÁ NOTA - ČERVENOU  
POLOVÁ NOTA - ŽLTOU  
ŠTVRŤOVÁ NOTA - MODROU



# Pracovní list č. 2



Opíš noty: c<sup>1</sup>, d<sup>1</sup>, e<sup>1</sup>, f<sup>1</sup>, g<sup>1</sup>.



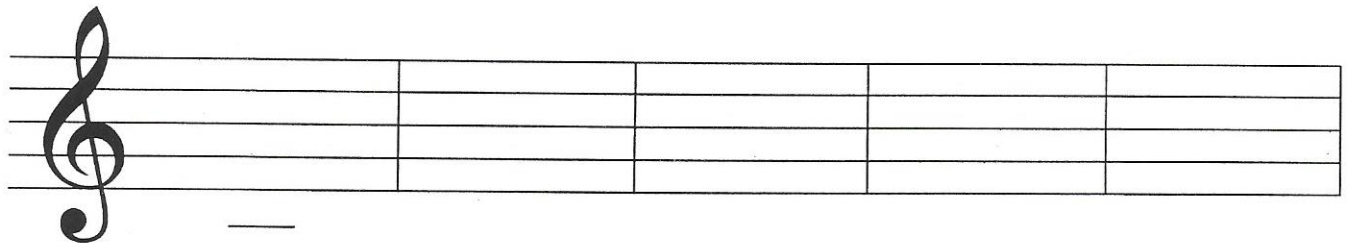
c<sup>1</sup>

d<sup>1</sup>

e<sup>1</sup>

f<sup>1</sup>

g<sup>1</sup>



c<sup>1</sup>

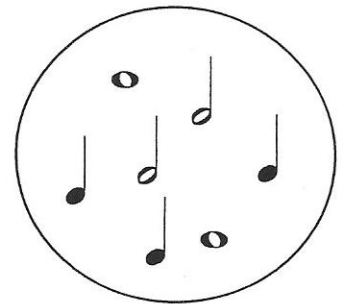
d<sup>1</sup>

e<sup>1</sup>

f<sup>1</sup>

g<sup>1</sup>

## Takt dvojštvrtňový



Doplň do prázdných taktov noty z bubliny. Nenechaj sa nachytať!

